

徐工徐工 助您成功  
XCMG FOR YOUR SUCCESS



# XE245DK 液压挖掘机

hydraulic excavator



地 址: 徐州经济技术开发区高新路39号  
邮 编: 221004  
客服电话: 400-110-9999  
Add: Address: No.39 Gaoxin Road Economy Technology  
Development Zone Xuzhou  
Postal Code: 221004  
Hot line: 400-110-9999



欢迎访问徐工商城  
省心更省钱一站式



欢迎关注徐工官方微信:  
1. 直接扫码“XCMG-999”添加好友。  
2. 查找公众账号“XCMG徐工集团”。  
3. 直接扫描上方二维码。

## 更节能环保

### More energy-conservation and environmental protection

采用共轨式超高压喷射发动机，低速大扭矩，燃油消耗低，经济性好，满足国三阶段排放标准。

The common rail super high pressure injection engine compliant with National III emission standard has low speed, large torque, low fuel consumption and good economy.



- 新一代液压元件，结合最新的研究成果，效率更高，控制更精准，品质可靠性更高，保证强劲挖掘力和优异的作业效率。

New generation hydraulic components have higher efficiency, more accurate control and higher reliability with combination of latest research achievements so that reliable strong digging force and excellent operating efficiency are ensured.



- 新一代微电脑控制技术，精准控制发动机的喷油时间和喷油量，使发动机始终运行在最佳经济区域，确保机器在各种作业状态下始终保持最佳的效率和经济性。

With new generation microcomputer control technology, fuel injection time and quantity of the engine can be controlled accurately so that the engine is always running in the optimum economic area, which ensures optimum efficiency and economy of the machine in various operating conditions.

## 更高效回报

### More efficient return

- 全新优化设计，配备1.3m<sup>3</sup>加强型铲斗，大幅提升挖掘装载效率。  
The brand new optimization design with 1.3m<sup>3</sup> reinforced bucket greatly improves digging and loading efficiency.

- 自主开发智能控制系统，通过自动调节流量分配及精确的功率匹配控制，实现矿山重载工况下高效、低耗。

The self-developed intelligent control system realizes high efficiency and low fuel consumption in mine heavy-load mode through automatic flow distribution and accurate power matching control.



## 更可靠耐用

### More reliable and durable

- 集成化电气系统集中控制，设计更简洁，系统更可靠。  
The integrated electric system has more concise design and higher reliability.

- 优化设计工作装置箱体结构，徐工自有专利技术保障，可靠性更高。

The optimization design of box structure of work devices and XCMG's own patented technology support contribute higher reliability.

斗杆前端、根部均采用中间加注润滑脂结构，提高可靠性。  
The structure of middle filling grease is adopted at the root of front end of arm so that reliability is improved.

采用新型T型套轴承，提高耐磨性。  
New T-type sleeve bearing is adopted so that wear resistance is improved.

新型挖斗设计，提高耐磨性，增强耳板和弧板强度，提高使用寿命。  
New type bucket design improves abrasive resistance, enhances the strength of ear plates and arc plates and improves service life.

标配可拆卸式三角形防撞梁，全方位防护车身，大大降低了外力撞击引起的车身变形、开裂。  
The detachable triangle anti-collision beam is equipped as standard configuration to protect vehicle body in all directions so that deformation and cracking of vehicle body caused by impact of external force are greatly reduced.



世界一流品质电气插接元件，防水等级达到IP56级，更加可靠。  
Electrical plug-in components with world-class quality have waterproofing grade up to IP56 and better reliability.

新型热管理系统，改善发动机、液压系统工作温度环境，提高系统效率，降低油耗，延长元件寿命。

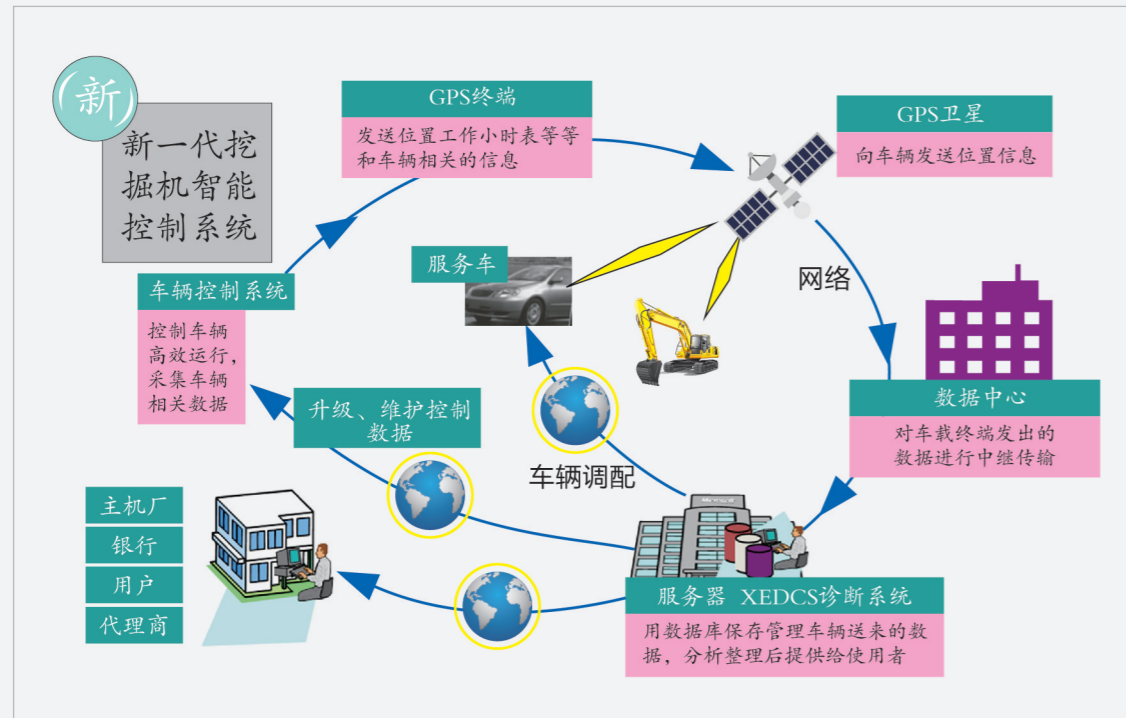
New type thermal management system is developed to improve operating temperature and environment of engine and hydraulic system so as to improve system efficiency, reduce fuel consumption and prolong service life of components.

全新矿山型加强底盘，宽轨距长履带，更可靠耐用。  
Brand new mine reinforced chassis has wide track gauge and long track shoe, more reliable and durable.

## 更智能管控 More intelligent control

- 智能管理系统，采用CAN总线通讯和物联网技术，集主控制系统、发动机ECM、监控系统、操控面板、GPS云控系统和现场诊断系统，实现机器信息数字化共享，提高产品智能化水平。

Advanced XCMG excavator intelligent management system, with the adoption of CAN bus communication and Internet of Things technology, the integration of main control system, engine ECM, monitoring system, control panel, GPS cloud point system and OBD system, digital sharing of machine information is achieved and intelligence level is improved.



- 便捷手机APP微服务，随时随地掌握车辆位置、作业状况、工作时间、燃油消耗、保养周期。  
With convenient mobile phone APP micro service, location of excavator, operating conditions, working hours, fuel consumption and maintenance period can be mastered anytime anywhere.
- 自主控制器采集车辆位置的海拔高度和发动机进气压力，自动判定确定数据库，显示器提醒使用高原模式。  
Autonomous controller collects the altitude of vehicle position and engine intake pressure, automatically determines and confirms database, and reminds the operator on the display to select plateau model.

## 更舒适安全 More comfortable and safe

- 全新设计驾驶室，超大视野，噪音更低，操作环境更舒适，功率空调，制冷效果更好，集成化控制面板，操控更便捷，8寸大显示屏，更时尚。  
Brand new cab has super large view, lower noise and more comfortable operating environment. Large power air-conditioner has better refrigerating effect. Integrated control panel brings more comfortable control, 8-inch large display is more fashionable.
- 家族式金盾外观设计，线条稳重，整机大气，充满力量感。  
With family style shield-shape appearance the machine has steady streamline, elegant and full of power.
- 配备一键急停按钮，施工安全有保证。  
With one-key emergency stop equipped, construction security is guaranteed.



## 便捷的维护保养 Convenient repair and maintenance

- 发动机滤芯集中放置，保养方便快捷。  
Engine filter elements are placed together, which brings convenient and fast maintenance.



# 定制化 Customization

## 标准配置 Standard configuration XE245DK

发动机 Engine	驾驶室与内饰 Cab and interior trim	安全与保安配置 Safety and security configuration
发动机型号 Engine model: QSB7 排放等级 Emission level: 国三 National III 自动预热 Automatic preheating 带水位指示传感器的油水分离器 Oil-water separator with water level indication sensor 径向密封空气滤清器 Radial seal air cleaner 空气预滤器 Air prefilter 50° C高温环境冷却组件 50° C high temperature ambient cooling assembly 散热器防尘网 Radiator dust screen 燃油油标 Fuel marker 油水快放装置 Oil-water quick release device 燃油呼吸阀 Fuel breather valve 空气压差指示器 Air pressure difference indicator 自动怠速 Automatic idle speed	增压驾驶室 Pressurized cab 完全可调的机械悬浮座椅 Fully adjustable mechanical suspension seat 可调节座位扶手 Adjustable seat armrest 安全带 (51 mm [2"] 宽) Seat belt (51 mm [2"] wide) 配备辅助装置的可开启挡风玻璃 Openable windscreen with auxiliary device 按 70/30 比例分割的前挡风玻璃 Front windshield divided by 70/30 ratio 双层夹胶挡风玻璃和其他钢化窗户 Double laminated windshield and other toughened windows 可滑动的车门上窗 Sliding door upper window 带除霜器的双向出风空调 (自动型) (加压功能) Bi-directional air outlet air conditioner with defroster (automatic type) (pressurization function) 可显示警告信息、滤清器/液体更换信息和工作小时数的彩色液晶显示屏 Color liquid crystal display capable of displaying warning information, filter / liquid replacement information and working hours 操纵手柄 Control handle 装有可拆卸手动操纵杆的行驶控制踏板 Travel control pedal with detachable manual control lever 两个立体扬声器 Two stereo speakers 饮料杯架 Beverage cup holder 衣帽钩 Coat and hat hook 可清洗地板垫 Cleanable floor mat 空调系统 Air conditioning system 高低速换挡 High and low gears shift 一键增压模式 One-key boost mode 顶部天窗 Top sunroof 间歇式多档雨刮器 Intermittent multi-gear wiper 杯架/文件袋 Cup holder/envelope 冷暖储物箱 Cold and warm storage box 无线电收音机 Radio receiver	驾驶门锁和各舱室锁 Driving door locks and cabin locks 警报喇叭 Alarm horn 发动机和油泵室之间的隔离板 Isolation plate between engine and oil pump chamber 发动机紧急停机开关 Engine Emergency Stop Switch 后窗紧急出口 Rear window emergency exit 蓄电池断路器 Battery circuit breaker 动臂、斗杆保持阀 Boom and arm retaining valve 过热报警 Overheat alarm 安全扶手和踏板 Safety handrails and pedals 防滑板/防滑贴 Anti-skid plate/anti-skid paste 液压安全锁定杆 Hydraulic safety locking lever 紧急逃生锤 Emergency escape hammer 左右后视镜 Left and right rearview mirrors

液压系统 Hydraulic system	电气系统 Electrical system
动臂/斗杆流量再生 Boom/arm flow regeneration 辅助液压阀 Auxiliary hydraulic valve 反向回转阻尼阀 Reverse rotation damping valve 自动回转停车制动器 Automatic rotation parking brake 液压缓冲阀 Hydraulic buffer valve 直行液压回路 Straight hydraulic circuit 动臂优先阀 Boom priority valve 回转逻辑阀 Rotary logic valve 液压油 ISO VG 46 Hydraulic oil ISO VG 46 回转防摇摆阀 Rotary anti-sway valve 仪表压力监控 Gauge pressure monitoring	蓄电池 (2 × 850 CCA) Battery (2 × 850CCA) 70 A 交流发电机 70A alternator 7.8 kW 启动马达 7.8 kW starting motor 24V点烟器 24V cigarette lighter

底盘系统与护罩 Chassis system and shield	照明灯 Lighting lamp
履带单护轨器 Track single rail protector 底架牵引环 Bottom frame traction ring 600 mm (24") 三筋履带板 600 mm (24") three-rib track shoe 保护装置套件: 底盘底部封板、行走马达封板 Protective device kit: chassis bottom sealing plate, walking motor sealing plate	左右两侧动臂工作灯 Right and left boom work lights 安装在储物箱上的右侧工作灯 Right working light installed on storage box 驾驶室内部照明 Cab interior lighting

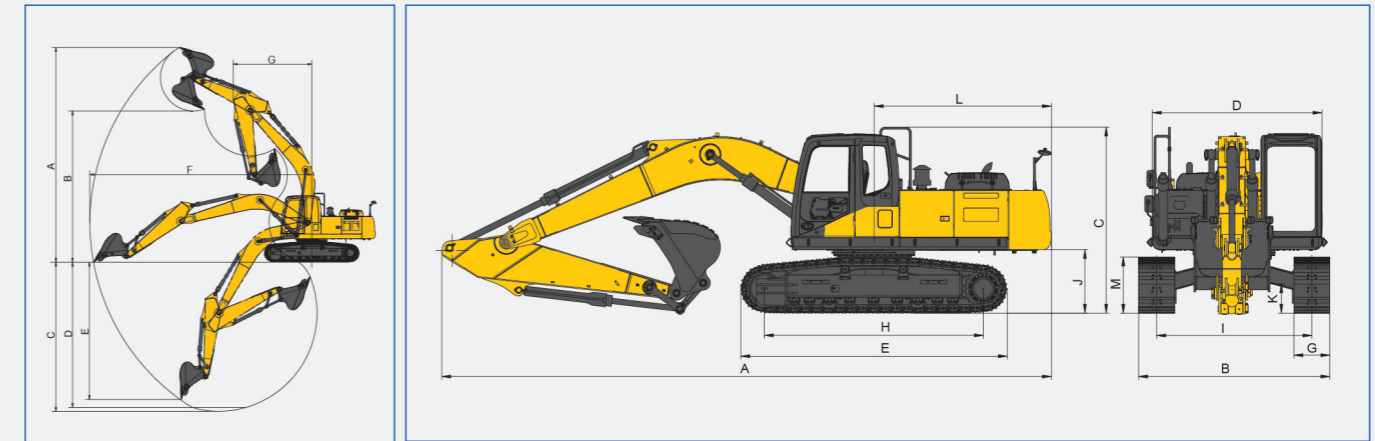
工作装置 Working device	配重 Counterweight
动臂 6.0m Boom 6.0 m 斗杆 2.964m Arm 2.964 m 铲斗 1.3m³加强斗 Bucket 1.3m³ Strengthening Bucket	5.4 t 配重 5.4 t counterweight

## 选装配置 Optional configuration XE245DK

带加热器油水分离器 (24V) Oil-water separator with heater (24V) 油浴型空气预滤器 Oil bath type air prefilter 冷却液加热器 (燃油式) Coolant heater (fuel type) 电控硅油离合器 Electronically controlled silicone oil clutch 燃油加油泵 50L/min Fuel filling pump 50L / min 燃油快速加注系统 Rapid fuel filling system 液压管路: 破碎锤和拇指钳 Hydraulic pipeline: breaking hammer and thumb clamp 操作方式切换 Operation mode switching 液压油 ISO VG 32, 68 Hydraulic oil ISO VG 32, 68 备用阀片 Spare valve plate 带坐垫加热的空气悬浮座椅 Air suspension seat with cushion heating 可伸缩安全带 (51 mm [2"] 宽) Retractable seat belt (51 mm [2"] wide) 车载供氧装置 Vehicle mounted oxygen supply device 灭火器 Fire extinguisher 工作辅具预留开关 Reserve switch for working aids 遮阳帘 sunshade curtain 动臂、斗杆管路防爆阀 Explosion-proof valve for boom and arm pipeline	旋转报警灯 Rotary alarm lamp 配重后视镜 Counterweight rearview mirror 滚翻保护结构ROPS Roll over protection structure (ROPS) 落物防护结构 (FOPS) Falling object protection structure (FOPS) 600 mm (24") 双筋履带板 600 mm (24") double-rib track shoe 700 mm (28") 双筋履带板 700 mm (28") three-rib track shoe 800 mm (31") 双筋履带板 800 mm (31") double-rib track shoe 700 mm (28") 三筋履带板 600 mm (24") three-rib track shoe 800 mm (31") 三筋履带板 800 mm (31") three-rib track shoe 履带橡胶块 Track rubber block 履带双护轨器 Track double rail protector 全长度履带护轨器 (两件式, 需更换下车架) Full-length track guard (two-piece, lower frame needs to be replaced) 斗杆 2.5m Arm 2.5 m 0.9m³岩石斗 0.9m³ rock bucket 1.4 m³土方斗 1.4m³ earthwork bucket 快速连接器 Quick connector 破碎锤 Breaking hammer 液压拇指钳 Hydraulic thumb pliers	松土器 Scarifier 振动夯 Vibrating tamper 液压剪 Hydraulic shear 抓具 Grab tool 高频破碎机 High frequency crusher 贝壳斗 Shell bucket 梅花抓斗 Plum grab bucket 筛型斗 Screen bucket 抓管机 Pipe grabbing machine 行走报警器 Walking alarm 12V点烟器 12V cigarette lighter 摄像头 Camera 5V USB接口 5V USB interface 12V电源接口 12V power interface 驾驶室顶安装的前工作灯 Front working light installed on cab top 驾驶室顶安装的后工作灯 Rear working light installed on cab top 200kg副配重 200 kg auxiliary counterweight 斗杆集中 Arm concentration
---	--	--

## XE245DK HYDRAULIC EXCAVATOR

## XE245DK 液压挖掘机



## 主要参数 / Main Specifications

型号 Model	单位 UOM	参数 Parameters
操作重量 Operating weight	Kg	25500
铲斗容量 Bucket capacity	m³	0.9-1.4

发动机 Engine		
发动机型号 Engine Model	/	QSB7
电喷 Electronic Injection	/	√
4冲程 Four Strokes	/	√
水冷 Water Cooling	/	√
涡轮增压 Turbocharging	/	√
空空中冷 Air-to-air Intercooler	/	√
缸数 No. of Cylinders	/	6
发动机额定功率 Rated Power	kw/rpm	150/2050
最大扭矩/转速 Maximum Torque/Speed	N.m/rpm	825/1250
排量 Displacement	L	6.7

主要性能 Main Performance		
行走速度 Travel Speed	km/h	5.3/3.6
回转速度 Swing Speed	r/min	11.2
爬坡能力 Gradeability	°	35
接地比压 Ground Pressure	kPa	56.7
铲斗挖掘力 Bucket Digging Force	kN	185
斗杆挖掘力 Arm Digging Force	kN	129
最大牵引力 Maximum Tractive Force	kN	199

液压系统 Hydraulic system		
主泵额定流量 Rated Flow of Main Pump	L/min	2 × 241
主安全阀压力 Main Safety Valve Pressure	MPa	34.3/37.0
行走系统压力 Travel System Pressure	MPa	34.3
回转系统压力 Swing System Pressure	MPa	25
先导系统压力 Pilot System Pressure	MPa	3.9

油类容量 Oil Capacity		
燃油箱容积 Fuel Tank Capacity	L	400
液压油箱容积 Hydraulic Tank Capacity	L	220
发动机机油容量 Engine Oil Capacity	L	19.5

## 外形尺寸 Overall Dimensions

A 总长 Overall Length	mm	10170
B 总宽 Overall Width	mm	3190
C 总高 Overall Height	mm	3110
D 转台宽度 Width of Platform	mm	2830
E 履带长度 Track Length	mm	4445
F 底盘总宽 Total Width of Chassis	mm	3190
G 履带宽度 Track Shoe Width	mm	600
H 履带轴距 Length to Center of Rollers	mm	3655
I 轨距 Track Gauge	mm	2590
J 配重离地间隙 Counterweight Clearance	mm	1062
K 最低离地间隙 Minimum Ground Clearance	mm	490
L 尾部最小回转半径 Minimum Tail Swing Radius	mm	2955
M 履带高度 Track Height	mm	942

## 工作范围 Working Range

A 最大挖掘高度 Maximum Digging Height	mm	10048
B 最大卸载高度 Maximum Dumping Height	mm	7123
C 最大挖掘深度 Maximum Digging Depth	mm	6972
D 8英尺水平面挖掘深度 Maximum Depth Cut for 2240mm(8 ft) Level Bottom	mm	-
E 最大垂直挖掘深度 Maximum Vertical Wall Digging Depth	mm	5567
F 最大挖掘半径 Maximum Digging Radius	mm	10240
G 最小回转半径 Minimum Swing Radius	mm	3510

材料和规格可随时改变, 恕不另行通知  
Materials and specifications may be changed at any time without prior notice