



All Rights Reserved

Materials and specifications are subject to change without notice.
Featured machines in photos may include additional equipment.
See your XCMG dealer for available options.



XE370DK

Hydraulic Excavator



www.xcmg.com

XCMG Regional Departments:

Europe	(+86-516) 87739703 87739218 87739537	Africa	(+86-516) 87735009 87739222 87739283
West Asia & North Africa	(+86-516) 87739702 87739202 87739223	Central Asia	(+86-516) 87739236 87739239 87739538
Asia-Pacific	(+86-516) 87739128 87739500 87739529	America	(+86-516) 87739285 87739551 87739710

XUZHOU CONSTRUCTION MACHINERY GROUP IMP. & EXP. CO., LTD

Add: No.1, Tuolanshan Road, Xuzhou Economic Developing Zone, Jiangsu, China 221004

Fax: (+86-516) 87739230

E-mail: export@xcmg.com

Advanced Configuration

Ecological and economical

- ▶ High-power engine is more fuel saving
- ▶ New Japan Kawasaki main pump can ensure high efficiency and reduced leakage
- ▶ Efficiency main valve increases overflow pressure and reduces pressure loss
- ▶ Smart matching technology ensures higher operating efficiency and lower fuel consumption

Excellent after-sales service

- ▶ Global after-sales service system and quick response mechanism
- ▶ Real-time technical consultation and maintenance

Convenient maintenance

- ▶ Easy maintenance design concept makes your maintenance done without dead angle
- ▶ Maintenance-free air prefilter,

Multiple application

- ▶ Variety of boom, stick and bucket matching to maximize utilization in different conditions;
- ▶ Multi-functional intelligent work tool control system can meet different operating requirements such as digging, breaking and dismantling
- ▶ Instantaneous pressurization function copes with complex working conditions.

Comfortable operating experience

- ▶ Air Conditioner and Heater with Double stage air filter ensure the appropriate temperature
- ▶ Silicone rubber shock absorber is adopted in the cab
- ▶ Air-suspending seat equipped with electric heating function
- ▶ Integrated control panel and large display screen provide multiple information
- ▶ ROPS and FOPS Cab can improve cab safety

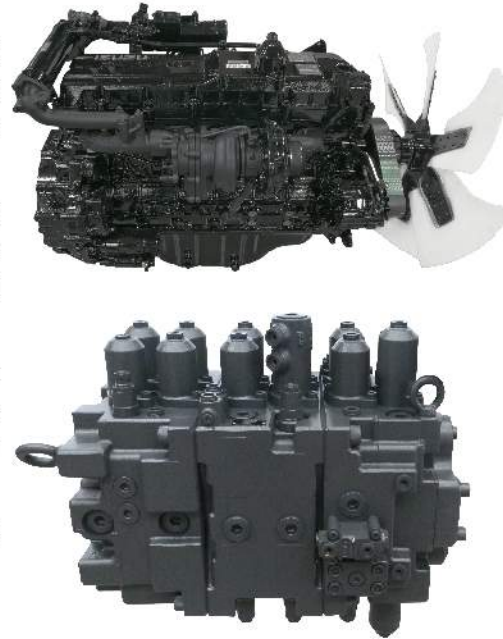
Safe and durable

- ▶ Whole brazing technology improves lifespan
- ▶ Upgrade undercarriage structure to improve load bearing performance
- ▶ Strengthened key stress-bearing parts of chain links



Ecological And Economical

- ▶ Low-speed and high-torque engine, providing excellent power output, good power curve and fuel consumption curve, more suitable for the actual working conditions of the excavator, featuring strong power and fuel saving. Engine map
- ▶ Apply the latest generation of controllers to optimize the power matching between the hydraulic pump and the engine, make full use of the engine power, reduce the waste of engine output power, and further reduce the fuel consumption of the whole machine.
- ▶ The efficient and fast hydraulic system is complemented by a new large-diameter multi-way control valve; the valve core control range is enlarged, the handling is improved, and the channel pressure loss is reduced by 30%, which greatly improves the overall working efficiency of the machine.
- ▶ A new generation of control system to achieve precise and fast matching of power system and hydraulic system, making full use of engine power.



Comfortable And Safe

- ▶ Air Conditioner and Heater with Double stage air filter: Indoor and outdoor environment temperature can be sensed through sensors and automatically adjusted to comfortable temperature. A good comfortable environment for operators can be provided with the cooperation of a multi-position adjustable air outlet.



- ▶ Silicone rubber shock absorber is adopted in the cab to reduce vibration and impact
- ▶ Comfortable high-performance seats: air-suspending seats with electric heating functions can achieve multi-dimensional adjustment and isolation of vibration waves.
- ▶ A new generation instrument has an 8-inch large screen display (the largest one among the industry). The page layout is more detailed and the picture is clearer.
- ▶ The cab is structurally reinforced and the seat is equipped with safety belts
- ▶ Equipped with fire extinguisher, safety escape hammer and anti-skid device



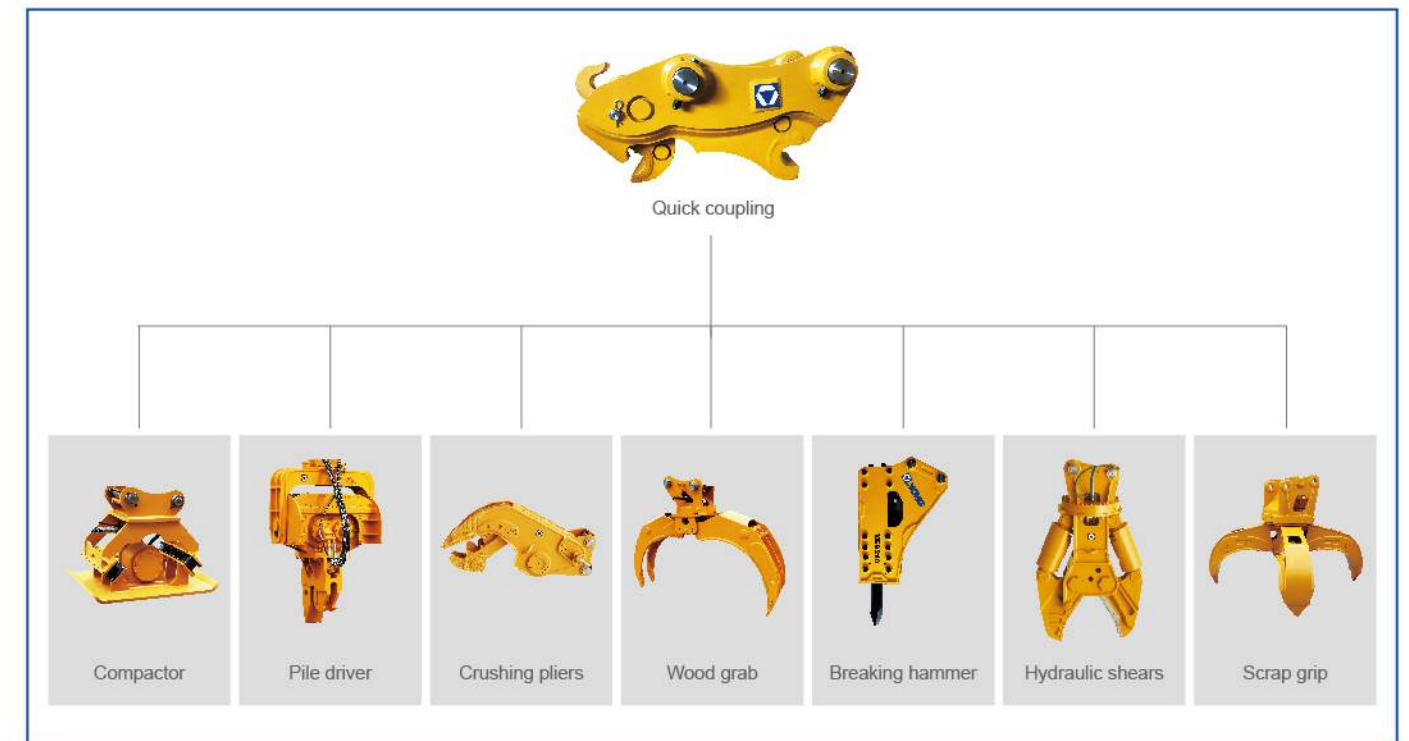
Reliable And Durable

- ▶ A new generation of electronic control system, integrating intelligence, environmental protection, safety and integration; comprehensive control of engine speed and hydraulic pump input power, combined with remote fault monitoring and self-diagnosis.
- ▶ The turntable adopts a rigid box structure to provide higher strength and improve the cab shock absorption ability. The engine mounting base structure is strengthened to improve shock absorption.
- ▶ With main body adopting I-beam rigid structure, the whole machine's strength is intensified, and the turntable side beam adopts the D-tube structure to improve its ability to resist external impact.
- ▶ Standard lengthened and reinforced undercarriage system allow for better stability and higher reliability while working in mines.
- ▶ The butter dish is changed from welding parts to integral stamping parts, which ensures the installation roundness of the sealing ring, prevents the sealing ring from wrinkling and improves the sealing performance. With strengthened X-beam section, and the strength of the end face is greatly improved by increasing the size, thickness and structure of the box beam.
- ▶ Heavy-duty and reinforced boom, arm and bucket can maintain strong digging forces under tough conditions.



Multiple application conditions

- ▶ The turntable adopts a rigid box structure to provide higher strength and improve the cab shock absorption ability. The engine mounting base structure is strengthened to improve shock absorption.
- ▶ With main body adopting I-beam rigid structure, the whole machine's strength is intensified, and the turntable side beam adopts the D-tube structure to improve its ability to resist external impact.
- ▶ Standard lengthened and reinforced undercarriage system allow for better stability and higher reliability while working in mines.
- ▶ The butter dish is changed from welding parts to integral stamping parts, which ensures the installation roundness of the sealing ring, prevents the sealing ring from wrinkling and improves the sealing performance. With strengthened X-beam section, and the strength of the end face is greatly improved by increasing the size, thickness and structure of the box beam.
- ▶ Heavy-duty and reinforced boom, arm and bucket can maintain strong digging forces under tough conditions.



Maintenance And Service

- ▶ An upwardly opening hood facilitates maintenance of the engine.
 - ▶ With a maintenance-free air pre-filter, the air pre-filter has a self-cleaning function.
- Daily maintenance points at your fingertips: Whether it is fuel filter, oil filter, pilot filter or water tank, it can be directly repaired on the ground.
- ▶ Covering a wide range of after-sales service systems, the quick response rescue mechanism guarantees your peace of mind.



The low-speed and high-torque engine of the XE370DK provides excellent power output, good power curve and fuel consumption curve, and is more suitable for the actual working conditions of the excavator. It has the characteristics of strong power and fuel saving. Heavy-duty reinforced booms, sticks and buckets maintain strong digging forces under harsh conditions. It can be used in mine operations, municipal construction, highway and bridge construction, digging and ditches, farmland water conservancy construction, etc.



Standard Equipment

	Name of equipment	XE370DK
Engine	Engine model	6HKX
	Emission level	Euro 3
	Automatic preheating	
	Oil-water separator with water level indication sensor	
	Radial seal air cleaner	
	Air prefilter	
	50°C high temperature ambient cooling assembly	
	Radiator dust screen	
	Fuel marker	
	Oil-water quick release device	
	Fuel breather valve	
	Air pressure difference indicator	
	Automatic idle speed	
	Hydraulic system	Boom/arm flow regeneration
Auxiliary hydraulic valve		
Reverse rotation damping valve		
Automatic rotation parking brake		
Hydraulic buffer valve		
Straight hydraulic circuit		
Boom priority valve		
Rotary logic valve		
Hydraulic oil ISO VG 46		
Rotary anti-sway valve		
Cab and interior trim	Gauge pressure monitoring	
	Pressurized cab	
	Fully adjustable mechanical suspension seat	

	Adjustable seat armrest
	Seat belt (51 mm [2 "] wide)
	Openable windscreen with auxiliary device
	Front windshield divided by 70/30 ratio
	Double laminated windshield and other toughened windows
	Sliding door upper window
	Bi-directional air outlet air conditioner with defroster (automatic type) (pressurization function)
	Color liquid crystal display capable of displaying warning information, filter / liquid replacement information and working hours
	Control handle
	Travel control pedal with detachable manual control lever
Cab and interior trim	Two stereo speakers
	Beverage cup holder
	Coat and hat hook
	Cleanable floor mat
	Air conditioning system
	High and low gears shift
	One-key boost mode
	Top sunroof
	Intermittent multi-gear wiper
	Cup holder/envelope
Safety and security configuration	Cold and warm storage box
	Radio receiver
	Driving door locks and cabin locks
	Alarm horn
	Isolation plate between engine and oil pump chamber
	Engine Emergency Stop Switch
	Rear window emergency exit
	Battery circuit breaker

	Boom and arm retaining valve
	Explosion-proof valve for boom and arm pipeline
	Overheat alarm
Safety and security configuration	Safety handrails and pedals
	Anti-skid plate/anti-skid paste
	Hydraulic safety locking lever
	Emergency escape hammer
	Left and right rearview mirrors
	Track single rail protector
Chassis system and shield	Bottom frame traction ring
	600 mm (24 ") three-rib track shoe
	Protective device kit: chassis bottom sealing plate, walking motor sealing plate
	Boom 6.4m
Working device	Arm 3.2 m
	Bucket 1.6m ³ Strengthen Bucket
	Battery (2× 850CCA)
Electrical system	70A alternator
	7.8 kW starter motor
	24V cigarette lighter
	Right and left boom work lights
Lighting lamp	Right working light installed on storage box
	Cab interior lighting
Counterweight	7.2 t counterweight
Technology	XEICS intelligent control system
	Data link socket

Optional Equipment

	Name of equipment	XE370DK
Engine	Oil-water separator with heater (24V)	
	Oil bath type air prefilter	
	Electronically controlled silicone oil clutch	
	Fuel filling pump 50L / min	
	Coolant heater (fuel type)	
	Rapid fuel filling system	
	Hydraulic pipeline: breaking hammer and thumb clamp	
Hydraulic system	Operation mode switching	
	Spare valve plate	
	Hydraulic oil ISO VG 32, 68	
	Air suspension seat with cushion heating	
Cab and interior trim	Reserve switch for working aids	
	Electric sunshade curtain	
	Retractable seat belt (51 mm [2 "] wide)	
	Vehicle mounted oxygen supply device	
	Fire extinguisher	
	Explosion-proof valve for boom and arm pipeline	
Safety and security configuration	Counterweight rearview mirror	
	Rotary alarm lamp	
	Roll over protective structure (ROPS)	
	Falling object protective structure (FOPS)	
	230 mm (24 ") double-rib track shoe	
Chassis system and shield	700 mm (28 ") three-rib track shoe	
	800 mm (31 ") double-rib track shoe	
	600 mm (24 ") three-rib track shoe	

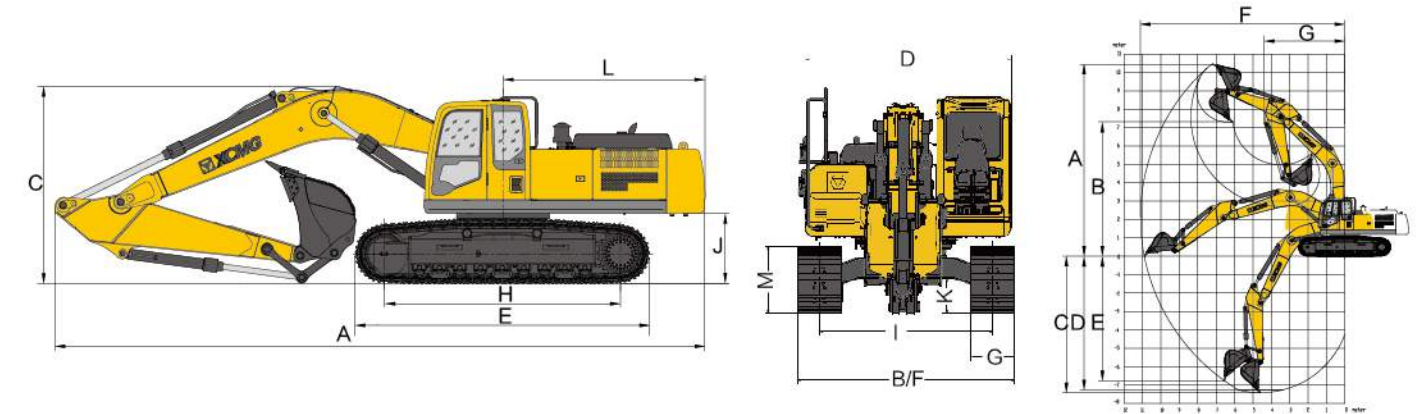
	800 mm (31 ") three-rib track shoe
Chassis system and shield	Extended undercarrige
	Track double rail protector
	Track rubber block
	Full-length track guard (two-piece, lower frame needs to be replaced)
	Boom 6.2m
	Arm 2.9m
	1.4-1.8m ³ rock bucket
	1.4-1.8m ³ Strengthened bucket
	1.4-1.8m ³ Earthmoving bucket
Working device	Quick coupler
	Hydraulic breaker
	Hydraulic thumb pliers
	Ripper
	Vibratory plate compactor
	Hydraulic shear
	Grapples
	High frequency crusher
	Clamshell bucket
	Scrap grapple
	Screening bucket
	Pipe grab
Electrical system	12V cigarette lighter
	Camera
	5V USB interface
	12V power interface
Lighting lamp	Front working light installed on cab top

Lighting lamp	Rear working light installed on cab top
Counterweight	200 kg auxiliary counterweight
Lubrication system	Electric self-lubricating system
	Arm concentration

Main Specifications

Item	unit	Main specifications
Model	/	XE370DK
Operation weight	Kg	36900
Bucket capacity	m ³	1.6-1.9
Engine	Model	/
	Electronic injection	/
	Four strokes	/
	Water cooling	/
	Turbocharging	/
	Air-to-air intercooler	/
	No.of cylinders	/
	Rated power	kw/rpm
	Maximum torque/speed	N.m/rpm
	Displacement	L
	Travel speed	km/h
	Swing speed	r/min
	Gradeability	°
Main performance	Ground pressure	kPa
	Bucket digging force	kN
	Arm digging force	kN
	Maximum tractive force	kN

Item	unit	Main specifications	
Hydraulic system	Main pump	/	
	Rated flow of main pump	L/min	2×296
	Main safety valve pressure	MPa	36
	Travel system pressure	MPa	34.3
	Swing system pressure	MPa	26.5
	Pilot system pressure	MPa	3.9
Oil Capacity	Fuel tank capacity	L	660
	Hydraulic tank capacity	L	350
	Engine oil capacity	L	30
Standard	Length of boom	mm	6400
	Length of arm	mm	2670
	Bucket capacity	m ³	1.7
	Length of boom	mm	-
Optional	Length of arm	mm	3200
	Bucket capacity	m ³	1.6/1.8/1.9



Working Range

Item	Unit	Parameters
A Max. digging height	mm	10135
B Max. dumping height	mm	6942
C Max. digging depth	mm	6934
D Maximum depth cut for 2240mm(8 ft) level bottom	mm	6712
E Maximum vertical wall digging depth	mm	5326
F Max. digging radius	mm	10480
G Min. swing radius	mm	4424

Dimensions

Item	Unit	Parameters
A Overall length	mm	11380
B Overall width	mm	3225
C Overall height	mm	3520
D Width of platform	mm	3220
E Track length	mm	5035
F Total Width of Chassis	mm	3190
G Track shoe width	mm	600
H Crawler base	mm	4040
I Track Gauge	mm	2590
J Counterweight Clearance	mm	1197
K Minimum Ground Clearance	mm	500
L Minimum Tail Swing Radius	mm	3700
M Track Height	mm	1105

Lifting Capacity

Lifting point height (m)	Rated lift capacity – Straight ahead (back) (kg)					Rated lift capacity – over-side (kg)				
	Lifting point radius (m)				Lifting capacity at maximum radius	Lifting point radius (m)				Lifting capacity at maximum radius
	3	4.5	6	7.5		1.5	3	4.5	6	
7.5					*8759					
6			*9301	*8722	*8695			*9301	7713	6954
4.5		*13404	*10573	*9236	*8770		*13404	10260	7543	6181
3			*12055	*9953	8863			9727	7249	5791
1.5			*13280	*10615	8723			9278	6976	5647
Ground		*18702	*13851	10905	8991		13009	8943	6802	5746
-1.5	*14413	*18483	*13353	10882	*9806	24798	12951	8834	6773	6183
-3	*25586	*16449	*11171		*11064	24981	13009	8927		7146
-4.5	*20382	*13953			*12708	*20382	13450			9562

Capacities marked with an asterisk(*) are limited by hydraulic capacities.